



ELECTRON/POSITRON CREATION

By Lew Paxton Price

www.lewpaxtonprice.us

**Copyright (C) 1999, and 2013
by Lew Paxton Price**

No army can withstand the strength of an idea whose time has come.
Victor Hugo

Appears that the electron is a vortex. A vortex is formed when there is a fluid medium that must turn 90 degrees to its original direction of motion. The whirlpool that forms when you empty a bathtub is a good example of this. The water in the bathtub is moving toward the drain. To enter the drain, it must move at 90 degrees to the direction it was moving to arrive near the drain. It has inertia and must obey the conservation laws of physics, so it takes a helical path to enter the drain. This creates a whirlpool.

For a long time I attempted to see if there were some way for nether to escape from the center of the electron vortex so that the center would remain as a near vacuum and allow the electron to continue to exist. Then I looked at the way an electron is created. There appears to be no way unless we introduce a fourth dimension into which the nether flows.

The creation of the electron only occurs when a positron is simultaneously created. A very powerful event occurs to make the creation of these two "particles" possible. This is the meeting of two gamma rays. Electromagnetic radiation is most powerful at the shorter wave lengths (highest frequencies). The energy in all such radiation is in transverse waves.

Elaborating upon these things, the electron is created, along with its anti-matter counterpart, the positron, from the collision of two high-energy electromagnetic rays. The use of high energy seems to be the way that most subatomic entities are formed - always with their anti-matter counterparts. Where the gamma rays meet, there is a rhythmic "kneading" of nether and a strong shearing action due to two pressure waves (accelerations) of nether coming together at twice the speed of light.

The fact that matter is formed with its anti-matter counterparts, implies that we have actions with opposing actions. This implies opposing directions that energy can take - which implies a single dimension - and that dimension is not one of our three dimensions of space. The gamma rays that meet cause extreme nether pressure that ruptures the fabric our three-dimensional space, so that nether must take a fourth-dimensional avenue of escape. The directions taken by nether must be in the equal and opposite directions of the fourth dimension.

[Every dimension has two directions from a point such as we occupy. Perhaps the ancients had a more comprehensive way of describing our three-dimensional space - because they described it as have six directions such as north/south, east/west, and up/down. A rupture causing high-energy leakage into the fourth dimension would cause amounts and velocities of nether to escape in both directions and these amounts and velocities would be the same for each of the two opposing directions.]

When two gamma rays of similar polarization meet, the tangential accelerations of one may be opposite in direction to those of the other. The resultant velocities of the nether from the waves meeting, cause pulling upon a small part of nether, which alternates between two directions which are at right angles to one another. These and the strong shearing forces of the tangential accelerations cause stresses that are strong enough to rupture three-dimensional space. The tangential component causes enough centrifugal force to keep the rent in our space open, and nether flows into the rent at its actual reactive speed which is the product of the square root of two and the speed of light. The result is a vortex of nether with an inward velocity vector and a tangential velocity vector that both equal the speed of light. Two such vectors acting at 90 degrees to one another cause a resultant that has a *magnitude equal to the product of the square root of two and the speed of light - $(2^{1/2})c$.

[The illustrations below were taken from Book Three of *Behind Light's Illusion* which is why page numbers are seen below some of them.]

1. Velocity and acceleration vectors for two gamma rays approach each other head on. Each acceleration vector has a magnitude of c , the speed of light.

Directions of wave travel.

2. The rays come closer to one another.

3. The rays are almost ready to meet. Notice the shearing action.

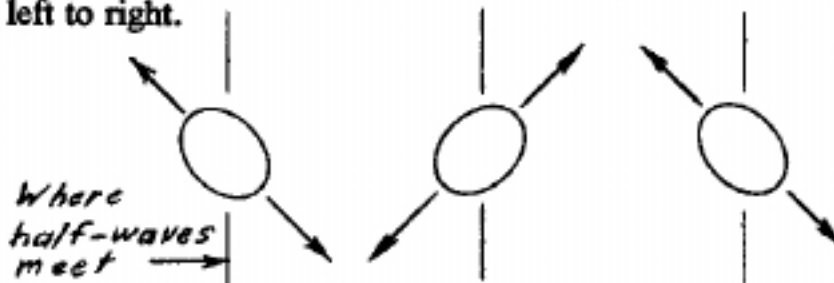
The 90 degree vectors shown above are understood from what is known (further discussed in book four). The wave fronts are arcs of circles so large that the fronts are almost straight. The above vectors are velocities and accelerations found in half of each wave at the point where they touch. Technically, the resultant of each acceleration set is $c\sqrt{2}$, but the radial vector for each remains a velocity which does not change from one half-wave to the next. So the shear from acceleration is tangential and the two accelerations meet, each with only a tangential acceleration of c .

The two half-wave fronts meet with a combined acceleration of $2c$, and extreme stress is developed at this point within the nether. The resultant velocity vectors of the *odd* numbered half-wave fronts (in order of meeting) meet at 90 degrees from the those of the *even* numbered half-wave fronts, so each wave causes extreme pulling of a part of the nether, alternately from two dimensions of the nether. Each wave pulls the nether first in one dimension, then in a second dimension at right angles to the first. The nether tends to spring back after each pull, reinforcing the pull to come. A resonance develops, in these two dimensions at the point of wave contact. In the 3rd dimension, at right angles to the first two dimensions, another resonance develops that has double the frequency of the first resonance because *every* half-wave causes the nether to pull in the 3rd dimension. As a consequence of the resonances and the continuing pulls, our 3-dimensional space is ruptured.

After the rupture develops, neither flows into the 4th dimension in the shearing directions of the last waves to meet, forming a vortex that becomes an electron and a positron.

The half-wave velocity resultants meet in the following fashion. The direction of wave travel is to the right for the vectors shown on the left side of each pair, and to the left for those shown on the right side of each pair.

The point in the nether that is being traumatized is analogous to a rubber ball that is alternately being squeezed from two directions at right angles to one another. The following sequence is from left to right.



The ball wants to spring back into a spherical shape after each squeeze. This intensifies the effect of the next squeeze (at right angles to the first), and the inertia of the rubber makes it wish to distend past its spherical state.

Looking at the ball from the side, we see that the ball is distended twice as often in the 3rd dimension as it is distended in the first two dimensions. And between distensions, the inertia of the rubber tends to make the ball compress. Again, the sequence is from left to right.



It is this 3rd dimension which appears to coincide with the rupture into the 4th, as if it is the dimension that finally ruptures in our 3 dimensional space.

This is an oversimplified explanation because it does not take into account the less obvious effects of the ripples of the waves. However, the explanation should be sufficient for now.

THE CREATION OF THE ELECTRON/POSITRON PAIR

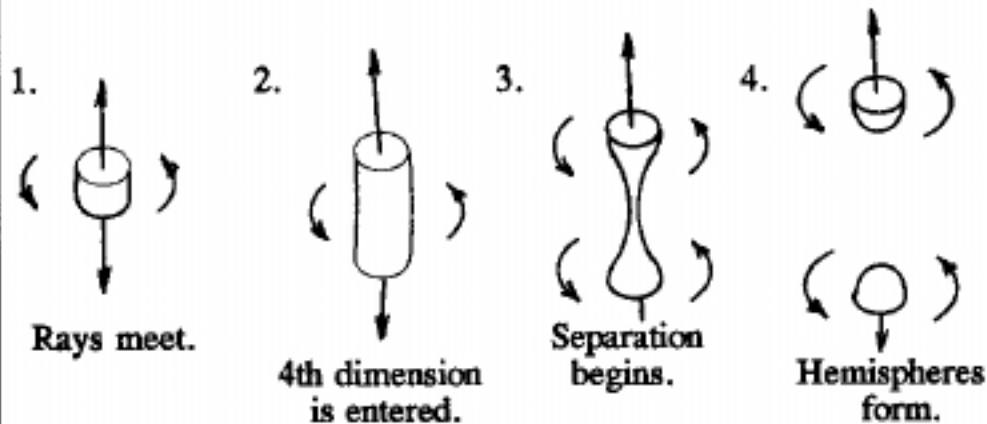
1. In number one below, we see the initial formation of the vortex from the meeting of two gamma rays.

2. This meeting ruptures our space to cause an opening to appear into the 4th dimension. The opening actually goes in two opposite directions, so that it appears that there are two openings. In one direction of the 4th dimension, we have the electron's opening. In the other direction, we have the positron's opening.

3. Each opening causes a "vacuum" into which nether can flow at a maximum rate of $c\sqrt{2}$. The vacuum causes an apparent attraction between the two vortices because the mouth of each is pulling in nether from the same direction as is the opposite vortex. The nether being pulled in must take a curved path and is being accelerated. Energy is required to overcome the inertia of the incoming nether. This causes the mouth to move in the direction of the incoming nether as an expedient to giving energy to it.

However, these are lightweight (low mass) vortices and the force from the inertia of the Mass of incoming nether is slight as compared to other attractions and repulsions. So the two vortices begin to separate and the vortex between them begins to resemble an hourglass.

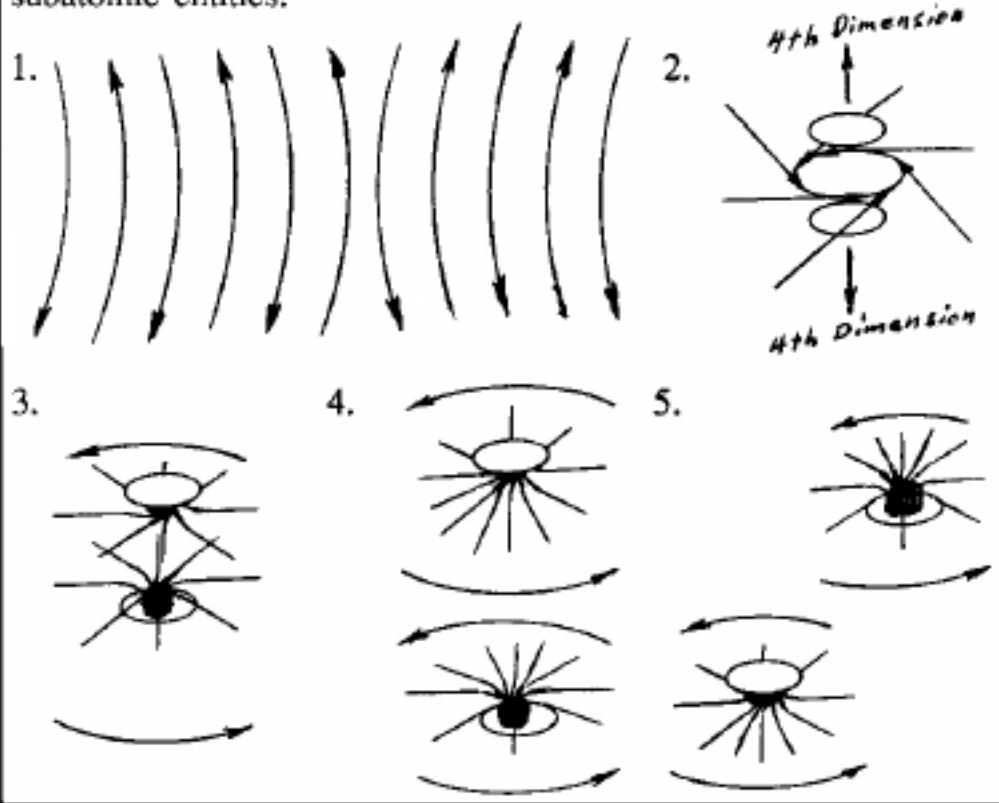
4. At last the two vortices separate and the vortices about them begin to resemble hemispheres, volumes where the velocity of the incoming nether begins to match the volume of the nether moving into the 4th dimension.



The arrows represent the two directions of the 4th dimension.

THE CREATION OF THE ELECTRON/POSITRON PAIR

1. In number one below, a series of waves from two gamma rays approach one another.
2. The rays meet and rupture our space to open a hole into the 4th dimension. Every dimension has two directions, and to us it appears as if two holes have opened. One is the opening that will become the electron vortex and the other is the one that will become the positron vortex.
3. Each opening causes a "vacuum" into which nether can flow. The two holes pull the nether in, creating a two-ended vortex.
4. The centrifugal force of the vortex acts against the nether pressure surrounding it, keeping a path open to the holes. The nether flow through the holes keeps them open. Other forces in the surrounding nether cause the holes to separate from one another.
5. The two holes separate and two vortices now exist as subatomic entities.



Each half-wave of each ray has an acceleration at 45 degrees to it's direction of travel that has a magnitude equal to the product of lightspeed and the square root of two. However, the radial acceleration vector is the same in every half-wave, so no real radial acceleration can exist from one half-wave to the next. Instead, the tangential acceleration vectors move outward at lightspeed, forming rays of light (electromagnetic radiation). This is explained in detail in the series *Behind Light's Illusion*.

The equation for kinetic energy is $E_k = (1/2)mv^2$.

Nether enters an electron or a positron center at a velocity that is the product of the square root of two and the speed of light. So at these centers,

$$v = (2^{1/2})c$$

$m = M/t$ What we call "mass" is the amount of nether "Mass" that enters a body in one second. So for the electron alone,

$$E_k = (1/2)mv^2$$

$$E_k = (1/2)m[(2^{1/2}c)^2]$$

$$E_k = (1/2)m(2^{1/2})^2c^2$$

$$E_k = (1/2)m2c^2$$

$$E_k = mc^2$$

Thus, the kinetic energy in both the electron and the positron, that is released when nether flow into them is stopped (when the two meet) equals

$$2E_k = mc^2 + mc^2 = 2mc^2$$

When they meet they annihilate one another because fourth-dimensional nether movement in one is in the opposite direction to the fourth-dimensional nether movement in the other. Two gamma rays are the result that have the same energy of the original gamma rays that created the electron/positron pair.

Because the fourth dimension is at right angles to all of our three dimensions, and the nether cannot move suddenly at right angles due its momentum, it continues on a curved path into the fourth dimension which is seen by us as "spin."

Every dimension has two directions. In the ancient world, men did not think in terms of three dimensions. They thought in terms of six directions instead. As you stand on the earth, the vertical dimension has two directions: up and down. One of the horizontal dimensions is composed of two other directions: north and south. The other horizontal dimension is composed of the directions east and west.

Matter is caused by the flow of nether in one direction of the fourth dimension, and anti-matter is caused by the flow of the nether in the other direction of the fourth dimension.

Because the definition of the fourth dimension is a dimension at right angles to the three we know, to us the apparent direction of flow into it will appear to be in any direction at all relative to our three, so an electron can turn in any way and move to any point in our three-dimensional space and the final flow into it will remain at right angles to all the dimensions of our space.

When an electron/positron pair is formed, the electron can go one way and the positron another. This process happens very quickly, but in a logical fashion. First, there is a tear in our space that is kept open by the centrifugal force of nether flowing into it. Next, a vortex is formed with two ends. And last, the two ends separate into two vortices and move apart. One vortex is the electron, and the other is the positron.

Mindstuff?

Perhaps the idea of actually rupturing our nether universe is not quite correct. The ancients seem to have had a slightly different idea. Their ideas should not be ignored because they did not separate science and religion, believing the the Creator was responsible for the universe - and the laws of the universe were, therefore, the laws of the Creator. Of course, this was a long time ago - before the last ice age.

Our playing cards today evolved from the Tarot - not the pop culture Tarot that seems to be so prevalent today, but the version that was put together in about 1200 AD by adepts and masters of all cultures who met to create a teaching method that would bring back the ancient secrets that have been lost to most of humankind. True, there have been a few new versions that have only altered the original in a positive way, but one must be careful to separate the wheat from the chaff when looking for a better version.

The Joker in today's playing cards is the watered-down version of the Fool in the old Tarot. It is supposed be everywhere and everywhen, and can pop up anywhere in the deck. It is the symbolic version of dynamic ether, representative of Beingness. It is the zero Tarot key that is simultaneously the number one. Why is it both zero and one?

Beingness is the quality of actually being. It has always existed. Think of it this way. If the Creator had created the universe, then who created the Creator? If a Greater Creator created the Creator, who created the Greater Creator? And if the a Much Greater Creator created the Greater Creator, then who created the Much Greater Creator? Obviously, this is a futile exercise in faulty logic.

The answer is that Beingness, is eternal. It has always been and always will be. This is why the ancients gave the Creator the symbol of Zero, a circle which has no beginning and no end. The ancient Hebrews used four letters to place the name of the Creator in written form. They are Yod Heh Vav Heh (I H V H). These are the letters found in three conjugations of the verb "to be": "that which was", "that which is",

and "that which always will be". The ancient Greeks called these letters "the Tetragrammaton". It was not a word, so it could not be pronounced. But the ignorant decided to pronounce it as "Jehovah". If we were to give the Creator a name that shows the true intent of the Tetragrammaton, we would call It "the Eternal".

The Creator was given the circle as Its symbol, partly because It is the "No-Thing" which is the Being that "eternally creates and sustains the universe". The "No-Thing" (nothing) cannot be represented as a "graven image" because it is "No-Thing". Its mind is in the "plane of the eternal" where all the laws of the universe (from mathematical laws to social laws) exist.

The "No-Thing" created the universes (all of them) from Itself (nothingness). It sustains them through Itself (the nothingness that is in the heart of the subatomic vortices that the ancients called "the whirlings").

Zero is the sum of all positive and negative numbers. It can also be considered the sum of all positive and negative dynamic ether. So first, the Creator divided Itself (the nothingness that was "the One") into positive and negative ether universes, alternating along the time line so that they touched one another. Thus, the One divided Itself into two fundamental parts.

Where a positive universe and a negative universe touched, they annihilated their substances to become nothing again, so that they no longer touched and were separated by micro-seconds along the time line. But there were very small parts that still touched - and their dynamic ethers flowed into those parts to become what we call subatomic entities. This was the foundation that became what our physicists call "dark energy". The ancients called it various names, all meaning "ether impregnated with motion (vortices and electromagnetic energy)".

So when two gamma rays meet, it is quite possible that they do not rupture the fabric of our universe. Instead, they may "bend" our universe outward along the two directions of the fourth dimension, causing a bulge, so that our positive universe touches the negative universes that are micro-seconds behind and in front of us, and the nothingness that is created becomes a hole into which our dynamic ether flows to become a "center of whirlings". But this is only conjecture - or is it?

The ancients sometimes called dynamic ether "mindstuff".

Minds are like parachutes - they only function when open.

Lord Devon

[Back to Top](#)

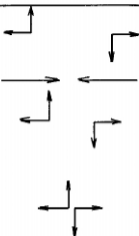
the general science
Journal

1. Velocity and acceleration vectors for two gamma rays approach each other head on. Each acceleration vector has a magnitude of c , the speed of light.

Directions of wave travel.

2. The rays come closer to one another.

3. The rays are almost ready to meet. Notice the shearing action.



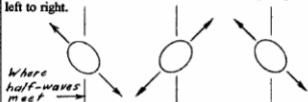
The 90 degree vectors shown above are understood from what is known (further discussed in book four). The wave fronts are arcs of circles so large that the fronts are almost straight. The above vectors are velocities and accelerations found in half of each wave at the point where they touch. Technically, the resultant of each acceleration set is $c\sqrt{2}$, but the radial vector for each remains a velocity which does not change from one half-wave to the next. So the shear from acceleration is tangential and the two accelerations meet, each with only a tangential acceleration of c .

The two half-wave fronts meet with a combined acceleration of $2c$, and extreme stress is developed at this point within the nether. The resultant velocity vectors of the *odd* numbered half-wave fronts (in order of meeting) meet at 90 degrees from the those of the *even* numbered half-wave fronts, so each wave causes extreme pulling of a part of the nether, alternately from two dimensions of the nether. Each wave pulls the nether first in one dimension, then in a second dimension at right angles to the first. The nether tends to spring back after each pull, reinforcing the pull to come. A resonance develops, in these two dimensions at the point of wave contact. In the 3rd dimension, at right angles to the first two dimensions, another resonance develops that has double the frequency of the first resonance because *every* half-wave causes the nether to pull in the 3rd dimension. As a consequence of the resonances and the continuing pulls, our 3-dimensional space is ruptured.

After the rupture develops, nether flows into the 4th dimension in the shearing directions of the last waves to meet, forming a vortex that becomes an electron and a positron.

The half-wave velocity resultants meet in the following fashion. The direction of wave travel is to the right for the vectors shown on the left side of each pair, and to the left for those shown on the right side of each pair.

The point in the nether that is being traumatized is analogous to a rubber ball that is alternately being squeezed from two directions at right angles to one another. The following sequence is from left to right.



The ball wants to spring back into a spherical shape after each squeeze. This intensifies the effect of the next squeeze (at right angles to the first), and the inertia of the rubber makes it wish to distend past its spherical state.

Looking at the ball from the side, we see that the the ball is distended twice as often in the 3rd dimension as it is distended in the first two dimensions. And between distensions, the inertia of the rubber tends to make the ball compress. Again, the sequence is from left to right.



It is this 3rd dimension which appears to coincide with the rupture into the 4th, as if it is the dimension that finally ruptures in our 3 dimensional space.

This is an oversimplified explanation because it does not take into account the less obvious effects of the ripples of the waves. However, the explanation should be sufficient for now.

THE CREATION OF THE ELECTRON/POSITRON PAIR

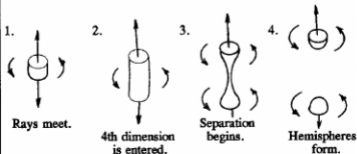
1. In number one below, we see the initial formation of the vortex from the meeting of two gamma rays.

2. This meeting ruptures our space to cause an opening to appear into the 4th dimension. The opening actually goes in two opposite directions, so that it appears that there are two openings. In one direction of the 4th dimension, we have the electron's opening. In the other direction, we have the positron's opening.

3. Each opening causes a "vacuum" into which nether can flow at a maximum rate of $c\sqrt{2}$. The vacuum causes an apparent attraction between the two vortices because the mouth of each is pulling in nether from the same direction as is the opposite vortex. The nether being pulled in must take a curved path and is being accelerated. Energy is required to overcome the inertia of the incoming nether. This causes the mouth to move in the direction of the incoming nether as an expedient to giving energy to it.

However, these are lightweight (low mass) vortices and the force from the inertia of the Mass of incoming nether is slight as compared to other attractions and repulsions. So the two vortices begin to separate and the vortex between them begins to resemble an hourglass.

4. At last the two vortices separate and the vortices about them begin to resemble hemispheres, volumes where the velocity of the incoming nether begins to match the volume of the nether moving into the 4th dimension.



The arrows represent the two directions of the 4th dimension.

THE CREATION OF THE ELECTRON/POSITRON PAIR

1. In number one below, a series of waves from two gamma rays approach one another.
2. The rays meet and rupture our space to open a hole into the 4th dimension. Every dimension has two directions, and to us it appears as if two holes have opened. One is the opening that will become the electron vortex and the other is the one that will become the positron vortex.
3. Each opening causes a "vacuum" into which nether can flow. The two holes pull the nether in, creating a two-ended vortex.
4. The centrifugal force of the vortex acts against the nether pressure surrounding it, keeping a path open to the holes. The nether flow through the holes keeps them open. Other forces in the surrounding nether cause the holes to separate from one another.
5. The two holes separate and two vortices now exist as subatomic entities.

